

A1 Ladys Pattern Polo Shirt – Short Sleeve

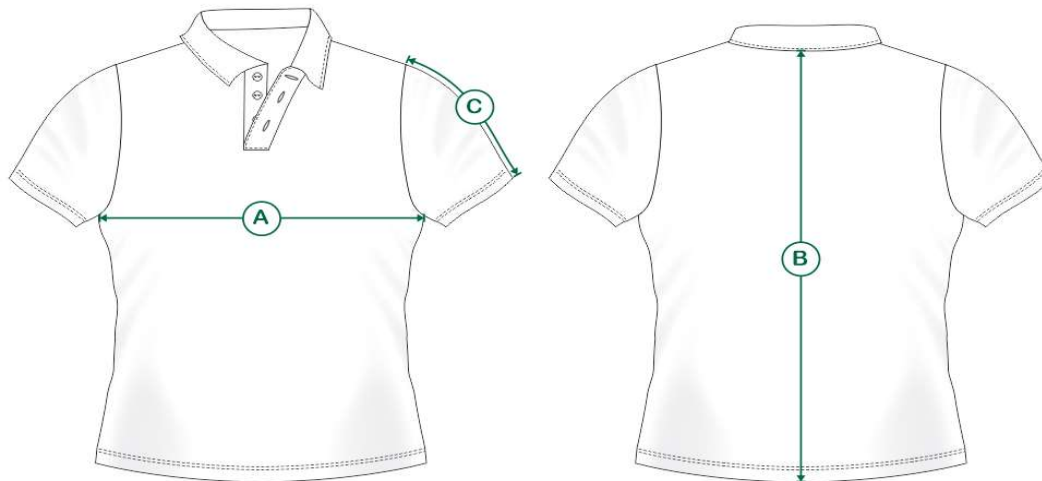


PRODUCT MEASUREMENTS

Size	F2XS / 4	FXS / 6	FS / 8	FM / 10	FL / 12	FXL / 14	F2XL / 16	F3XL / 18	F4XL / 20	F5XL / 22	F6XL / 24	F7XL / 26
Chest Circumference (CM)	44	46	48	50	52	54	56	58	60	63	66	69
Body Length (CM)	61.5	62.5	66	67	68	69	70	71	72	74	76	78
Sleeve Length (CM)	17.5	18	18	18.5	18.5	19	19.5	20.5	21.5	23	24	25

* These figures are indicative only, and some variation should be expected, due to fabric stretch and production tolerances.

MEASURING GUIDE



- A. Chest circumference: Measured 2.5cm below armhole
- B. Body length: Measured on the reverse, from high shoulder point
- C. Sleeve length: Measured from the shoulder seam to the end of sleeve

Code: EUPLFSS-001